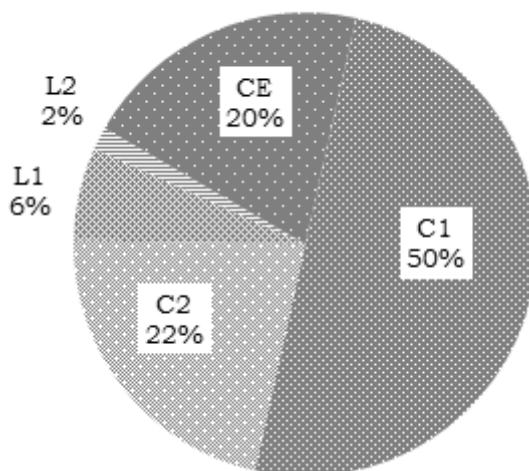


Alcuni dati sui Giochi d'Autunno 2018

a cura di Fabio Geronimi

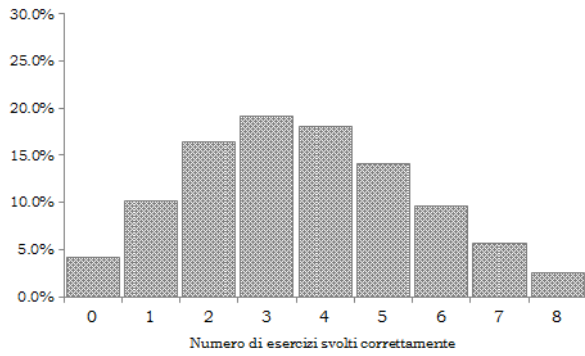
Numero di concorrenti:	158,866	Categoria	Concorrenti	% concorrenti
Scuole coinvolte:	1,974	CE	32,070	20%
Comuni coinvolti:	1,171	C1	79,374	50%
Province coinvolte:	107	C2	34,663	22%
Regioni coinvolte:	20	L1	10,277	6%
		L2	2,482	2%

Concorrenti per categoria

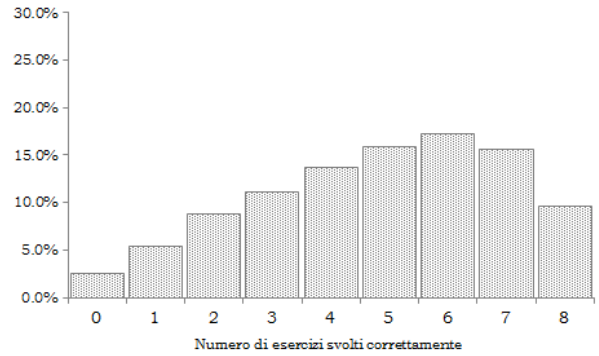


Categoria	Totale esercizi corretti									Totale concorrenti	Media esercizi corretti	
	0	1	2	3	4	5	6	7	8			
CE	818 2.6%	1,733 5.4%	2,807 8.8%	3,555 11.1%	4,413 13.8%	5,103 15.9%	5,533 17.3%	5,014 15.6%	3,094 9.6%	32,070	20%	4.81
C1	4,109 5.2%	9,324 11.7%	15,021 18.9%	16,845 21.2%	14,872 18.7%	10,239 12.9%	5,900 7.4%	2,463 3.1%	601 0.8%	79,374	50%	3.25
C2	1,316 3.8%	3,752 10.8%	6,133 17.7%	7,457 21.5%	6,932 20.0%	5,124 14.8%	2,753 7.9%	1,007 2.9%	189 0.5%	34,663	22%	3.37
L1	283 2.8%	949 9.2%	1,623 15.8%	2,123 20.7%	1,971 19.2%	1,698 16.5%	1,087 10.6%	435 4.2%	108 1.1%	10,277	6%	3.64
L2	139 5.6%	337 13.6%	591 23.8%	516 20.8%	462 18.6%	269 10.8%	108 4.4%	42 1.7%	18 0.7%	2,482	2%	2.96
Totale	6,665 4.2%	16,095 10.1%	26,175 16.5%	30,496 19.2%	28,650 18.0%	22,433 14.1%	15,381 9.7%	8,961 5.6%	4,010 2.5%	158,866		3.61

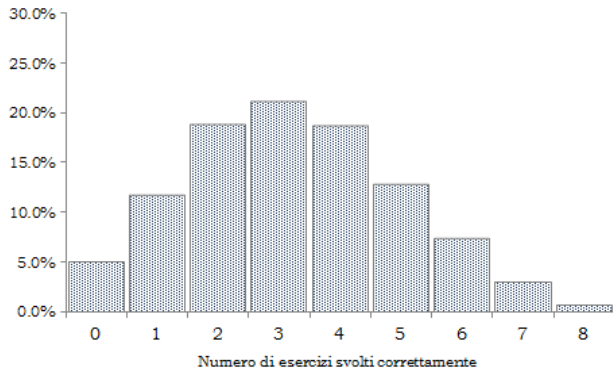
Numero medio esercizi corretti (totale): 3.61



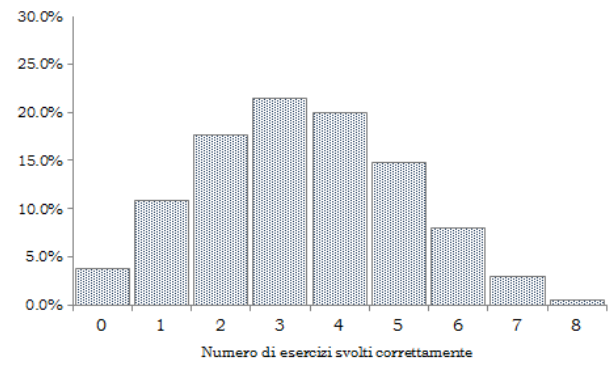
Numero medio esercizi corretti categoria CE: 4.81



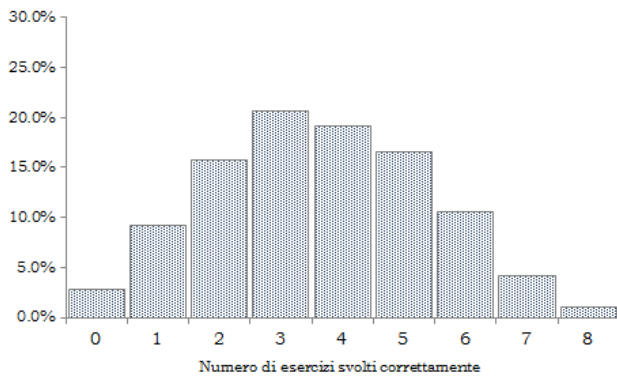
Numero medio esercizi corretti categoria C1: 3.25



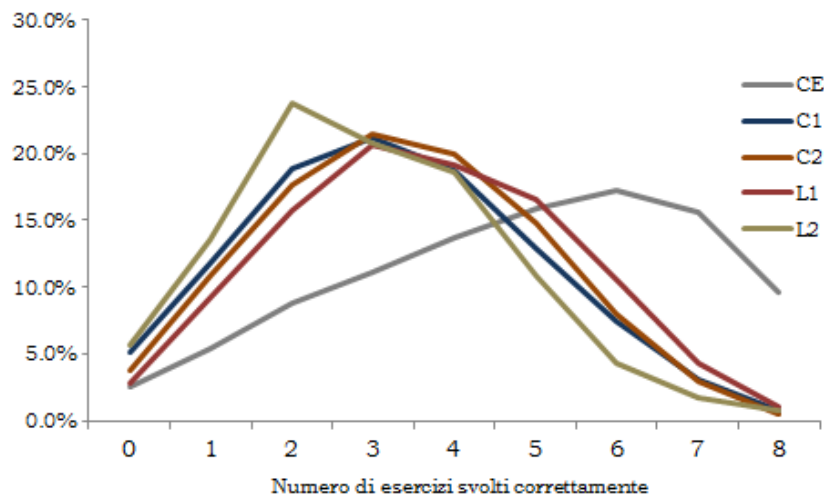
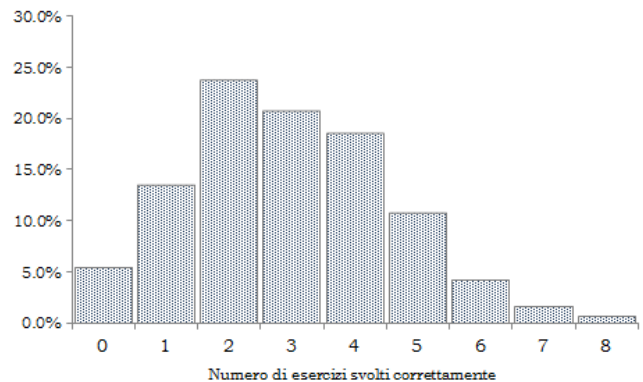
Numero medio esercizi corretti categoria C2: 3.37



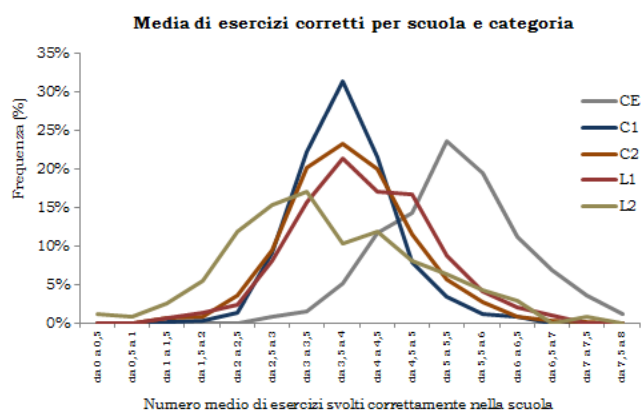
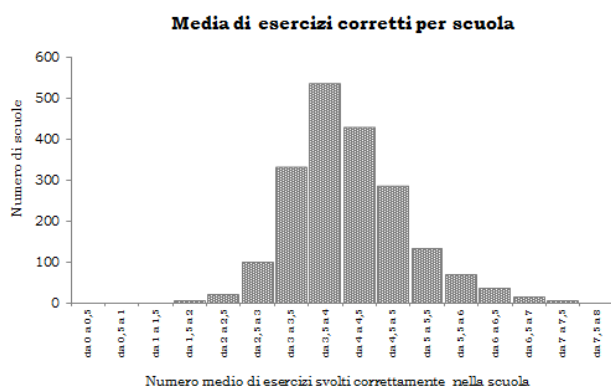
Numero medio esercizi corretti categoria L1: 3.64



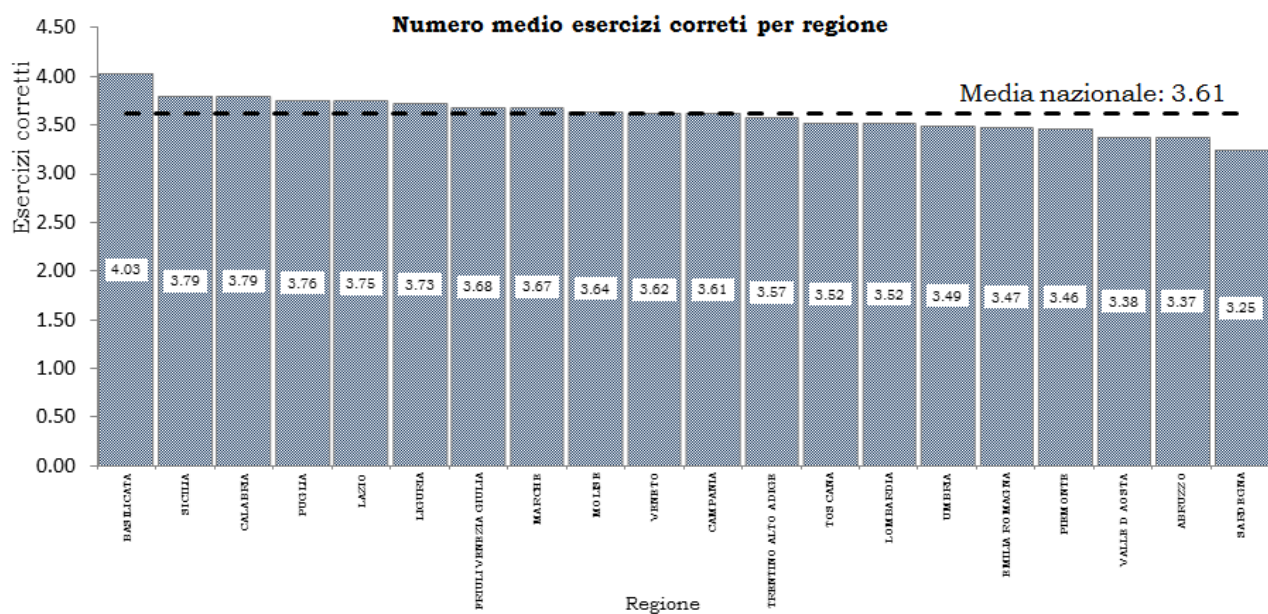
Numero medio esercizi corretti categoria L2: 2.96



Media di esercizi corretti per scuola	Numero di scuole					Totale scuole	
	CE	C1	C2	L1	L2		
da 0 a 0,5	0	0	2	0	3	1	0%
da 0,5 a 1	0	0	0	0	2	0	0%
da 1 a 1,5	0	2	11	2	6	0	0%
da 1,5 a 2	0	5	16	4	13	6	0%
da 2 a 2,5	0	22	62	7	28	22	1%
da 2,5 a 3	6	141	163	23	36	100	5%
da 3 a 3,5	10	345	347	45	40	332	17%
da 3,5 a 4	32	484	402	61	24	534	27%
da 4 a 4,5	73	333	345	49	28	429	22%
da 4,5 a 5	89	123	200	48	19	286	14%
da 5 a 5,5	147	54	99	25	15	134	7%
da 5,5 a 6	121	20	49	12	10	70	4%
da 6 a 6,5	70	13	16	6	7	36	2%
da 6,5 a 7	43	1	7	3	0	15	1%
da 7 a 7,5	23	0	3	0	2	7	0%
da 7,5 a 8	8	0	0	0	0	2	0%
Totale	622	1,543	1,722	285	233	1,974	



Regione	Media esercizi corretti	Δ rispetto a media nazionale
LOMBARDIA	3.52	-2.5%
LAZIO	3.75	+3.8%
CAMPANIA	3.61	+0.1%
PIEMONTE	3.46	-4.2%
VENETO	3.62	+0.2%
PUGLIA	3.76	+4.0%
SICILIA	3.79	+5.0%
EMILIA ROMAGNA	3.47	-4.0%
TOSCANA	3.52	-2.4%
MARCHE	3.67	+1.7%
CALABRIA	3.79	+5.0%
SARDEGNA	3.25	-10.1%
UMBRIA	3.49	-3.3%
ABRUZZO	3.37	-6.6%
LIGURIA	3.73	+3.2%
FRIULI VENEZIA GIULIA	3.68	+1.9%
MOLISE	3.64	+0.8%
BASILICATA	4.03	+11.5%
TRENTINO ALTO ADIGE	3.57	-1.1%
VALLE D AOSTA	3.38	-6.5%
Totale	3.61	



<i>Provincia</i>	<i>Media esercizi corretti</i>	<i>Δ rispetto a media nazionale</i>	<i>Provincia</i>	<i>Media esercizi corretti</i>	<i>Δ rispetto a media nazionale</i>	<i>Provincia</i>	<i>Media esercizi corretti</i>	<i>Δ rispetto a media nazionale</i>
<i>BZ</i>	4.24	+17.5%	<i>TS</i>	3.68	+1.9%	<i>BG</i>	3.44	-4.8%
<i>MT</i>	4.22	+16.9%	<i>CB</i>	3.66	+1.5%	<i>SU</i>	3.44	-4.8%
<i>GE</i>	4.17	+15.5%	<i>MC</i>	3.66	+1.3%	<i>TN</i>	3.43	-5.0%
<i>MS</i>	4.02	+11.4%	<i>MI</i>	3.66	+1.3%	<i>RO</i>	3.43	-5.1%
<i>AR</i>	4.02	+11.2%	<i>AL</i>	3.64	+0.9%	<i>OR</i>	3.42	-5.4%
<i>CT</i>	4.02	+11.2%	<i>VA</i>	3.64	+0.6%	<i>CH</i>	3.41	-5.5%
<i>CS</i>	4.00	+10.6%	<i>PU</i>	3.63	+0.4%	<i>FI</i>	3.41	-5.6%
<i>KR</i>	3.98	+10.1%	<i>AV</i>	3.63	+0.4%	<i>LU</i>	3.41	-5.6%
<i>PZ</i>	3.97	+10.0%	<i>TV</i>	3.62	+0.1%	<i>PE</i>	3.40	-5.8%
<i>AT</i>	3.95	+9.5%	<i>RN</i>	3.62	+0.1%	<i>CA</i>	3.40	-5.9%
<i>SP</i>	3.90	+7.9%	<i>SO</i>	3.61	+0.0%	<i>VT</i>	3.39	-6.2%
<i>SR</i>	3.88	+7.4%	<i>MN</i>	3.60	-0.2%	<i>AO</i>	3.38	-6.5%
<i>BA</i>	3.88	+7.4%	<i>FR</i>	3.60	-0.3%	<i>RG</i>	3.37	-6.6%
<i>PN</i>	3.86	+6.9%	<i>BO</i>	3.60	-0.3%	<i>FE</i>	3.36	-6.8%
<i>CZ</i>	3.84	+6.4%	<i>IS</i>	3.58	-0.8%	<i>MB</i>	3.34	-7.4%
<i>TP</i>	3.84	+6.2%	<i>PT</i>	3.56	-1.3%	<i>TO</i>	3.34	-7.6%
<i>SA</i>	3.83	+6.1%	<i>TE</i>	3.56	-1.4%	<i>RA</i>	3.32	-8.2%
<i>ME</i>	3.82	+5.8%	<i>PV</i>	3.56	-1.5%	<i>LT</i>	3.31	-8.4%
<i>BN</i>	3.82	+5.7%	<i>PA</i>	3.55	-1.6%	<i>LI</i>	3.25	-10.1%
<i>RM</i>	3.82	+5.6%	<i>BL</i>	3.55	-1.6%	<i>SV</i>	3.23	-10.7%
<i>BT</i>	3.81	+5.6%	<i>EN</i>	3.55	-1.7%	<i>VV</i>	3.20	-11.3%
<i>LE</i>	3.80	+5.3%	<i>GO</i>	3.55	-1.7%	<i>CR</i>	3.19	-11.5%
<i>BI</i>	3.79	+5.1%	<i>VI</i>	3.55	-1.7%	<i>PC</i>	3.19	-11.6%
<i>BR</i>	3.79	+5.0%	<i>CN</i>	3.54	-2.0%	<i>VC</i>	3.18	-11.8%
<i>AP</i>	3.79	+5.0%	<i>CO</i>	3.54	-2.0%	<i>PR</i>	3.16	-12.4%
<i>AN</i>	3.75	+3.8%	<i>FG</i>	3.53	-2.2%	<i>FM</i>	3.13	-13.2%
<i>RI</i>	3.74	+3.7%	<i>PI</i>	3.52	-2.5%	<i>IM</i>	3.11	-14.0%
<i>CL</i>	3.73	+3.2%	<i>BS</i>	3.51	-2.9%	<i>TR</i>	3.11	-14.0%
<i>PD</i>	3.73	+3.1%	<i>RE</i>	3.50	-3.0%	<i>AQ</i>	3.06	-15.2%
<i>UD</i>	3.72	+3.0%	<i>NO</i>	3.50	-3.0%	<i>FC</i>	3.06	-15.3%
<i>RC</i>	3.71	+2.8%	<i>TA</i>	3.50	-3.2%	<i>LO</i>	3.01	-16.5%
<i>MO</i>	3.71	+2.8%	<i>AG</i>	3.49	-3.4%	<i>PO</i>	3.01	-16.6%
<i>VE</i>	3.71	+2.6%	<i>NA</i>	3.49	-3.4%	<i>SS</i>	2.96	-18.0%
<i>CE</i>	3.70	+2.4%	<i>VR</i>	3.49	-3.4%	<i>VB</i>	2.96	-18.2%
<i>PG</i>	3.70	+2.4%	<i>GR</i>	3.48	-3.8%	<i>NU</i>	2.89	-19.9%
<i>SI</i>	3.69	+2.2%	<i>LC</i>	3.44	-4.7%			